

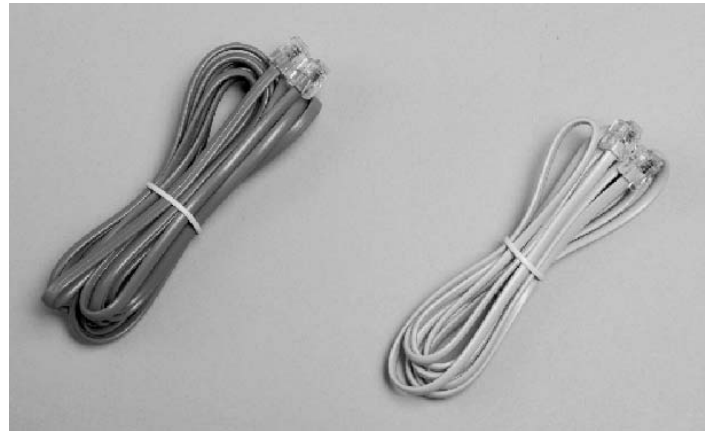
Thank you for your subscribing Yahoo! BB ADSL Connection Service. This manual explains how to set up BB Phone Service and Yahoo! BB ADSL Connection Service.

## Check items in the box

Make sure you have these items:



Yahoo! BB Trio Modem 12M (1)



modular cables (2)



power supply (1)



LAN cable (1)



"Easy Setup 3" CD-ROM (1)

- ※ Shape in photo may differ.
- ※ Yahoo! BB Trio Modem has a built-in splitter.

## Please prepare the following items:

### ■ Customers for BB Phone Service

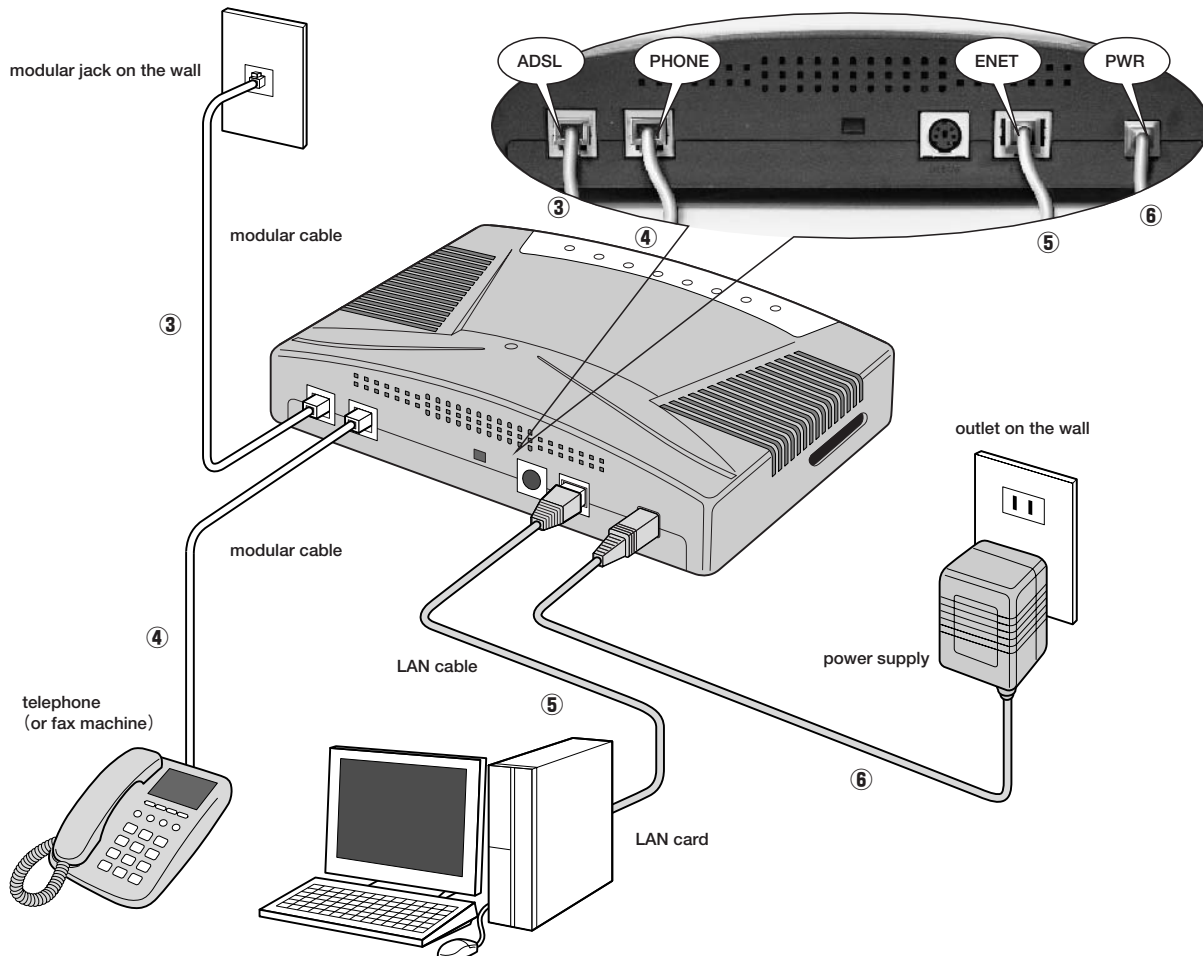
- telephone (or fax machine)

### ■ Customers Yahoo! BB ADSL Service

- PC (Personal Computer) - Recommended: Windows 98/98SE/Me/2000/XP, MacOS (recommended OpenTransport 2.7 or later).
- LAN card for 10Base-T or 100Base-TX (PC Card/PCMCIA type or USB connected type for note PC)

- ※ We recommend PCs which came out in 3 years or newer for our broad band contents.
- ※ Although you can use this service with Windows95, we recommend Windows98 or later for ease of installation of LAN card and network settings (Microsoft provides no support for Windows95 now).
- ※ We recommend OpenTransport 2.7 or later for Macintosh. If you do not have it, please update OS (to Mac OS 9.1 or later, Mac OS X or later) or OpenTransport. We can not guarantee that we provide good connection with older versions.
- ※ You can use this package with other OSs like PC UNIX (Linux etc.) and Windows NT if it can handle TCP/IP and get IP address with DHCP. But you can not get any support for these OSs.
- ※ A Japanese-localized OS (Operating System) is recommended.

## Yahoo! BB ADSL Service Connection of equipments



### ① Turn off all equipments

Turn off all equipments you connect (PC/Trio Modem/telephone).

### ② Disconnect your telephone (or fax machine)

Disconnect the modular cable between your telephone (or fax machine) and modular jack on the wall.

### ③ Connect Trio Modem to modular jack

Connect "ADSL" port on Trio Modem and modular jack on the wall with modular cable in this package.

### ④ Connect Trio Modem and your telephone (or fax machine)

Connect the modular cable from your telephone (or fax machine) to the "PHONE" port on Trio Modem, and then turn on your telephone (or fax machine).

### ⑤ Connect Trio Modem to PC

Find LAN cable in the package. Connect LAN card and "ENET" port on Trio Modem with the cable.

### ⑥ Turn on Trio Modem

Find a power supply in the package and connect it to "PWR" port on Trio Modem, then connect it to the outlet on the wall.

### ⑦ Turn on your PC

Wait until "リンク" (Link) indicator turns on, then turn on your PC.

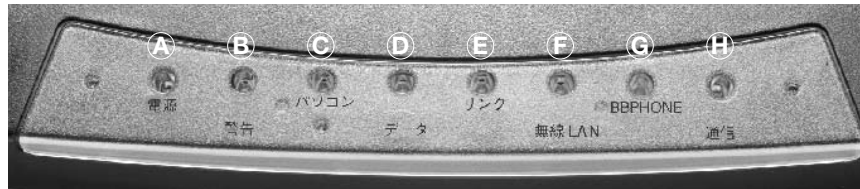
※ Please install modem on flat place with good air flow.

## Caution:

- ※ When you turn on these equipments, please follow this order: 1.Yahoo! BB Trio Modem 12M, 2.PC. Please perform each power on at the interval for 1-2 minutes.
- ※ Please follow this order every time you turn on these equipments. After "リンク" (Link) LED indicator turn on, do not turn off the power to the modem. You can not use Yahoo! BB ADSL Connection Service and BB Phone Service while the modem is off.
- ※ Do not touch telephone line during a storm. Disconnect the power supply and PC from outlet during lightning storm to avoid damages.
- ※ Keep the equipments and cables dry.
- ※ Be careful not to overload the outlet when you connect your equipments to outlets.

※BB Phone Service is standard service of Yahoo! BB ADSL Connection Service from April 25, 2002.

## Front Panel and Indicators on Yahoo! BB Trio Modem 12M



- Ⓐ **電源 (Power)** . . . . . This LED will light when Yahoo! BB Trio Modem 12M is supplied power. When it does not light, please check connection of the power supply.
- Ⓑ **警告 (Warning)** . . . . . This LED will light when an error occurs. Please turn off the modem once then turn on again, if this indicator keeps lighting.
- Ⓒ **パソコン (PC)** . . . . . This LED will light when the modem has a proper connection with your PC. While the power of your PC is not on, it will not light.
- Ⓓ **データ (Data)** . . . . . This LED will blink while any communication with your PC. It will not blink if there is no communication with your PC.
- Ⓔ **リンク (Link)** . . . . . This LED indicates the condition of the ADSL signal. It will not light if the modem is not connected to the telephone line or cannot get the ADSL signal from our equipment in the NTT's central office.
- Ⓕ **無線LAN (Wireless LAN)** . . . This LED is used with a Wireless LAN card. It will not light when a Wireless LAN card is not installed.
- Ⓖ **BBPHONE** . . . . . This LED will light when BB Phone Service is available. If it does not light, you can not use BB Phone Service.
- Ⓗ **通信 (Communication)** . . . This LED will blink when you communicate via ADSL Service or pick up a receiver via BB Phone Service. It also blink when you get an inbound calling and the telephone rings. It will neither light nor blink while you are using NTT's telephone service.

## Confirmation for ADSL Connection <check the status with LED indicators>

- ① "リンク" (Link), "パソコン" (PC) are on but you can not connect to Internet.  
The Internet connection setting on your PC might be wrong.

[Confirm network settings on your PC.]

- ② "パソコン" (PC) LED is off after you turn on the modem.  
The modem failed to communicate with your PC.

[Confirm the cable connection between the modem and your PC, and LAN card drivers on your PC.]

- ③ "リンク" (Link) LED does not light after 1 or 2 minutes from power-on.  
The modem can not receive ADSL signal.

[Confirm connection between equipments and modular jack. If there are no problem in physical connection, consider following: line condition or environment in your room (other service using the telephone line etc.), the jumper installation by NTT has not been finished.]

- ④ "リンク" (Link) LED is blinking in every 1 second.  
The modem can not receive ADSL signal.

[Confirm connection between equipments and modular jack. If there are no problem in physical connection, consider following: line condition or environment in your room (other service using the telephone line etc.), the jumper installation by NTT has not been finished.]

- ⑤ "リンク" (Link) LED is blinking at rapid rate or turning on and off randomly.  
The modem can receive ADSL signal but can not establish stable connection to equipments in NTT side.

[Confirm connection between equipments and modular jack. If there is no problem in physical connection, consider following: line condition or environment in your room (other service using the telephone line etc.)]

※ You can check if the jumper installation has been finished via [http://edit.secure.yahoo.co.jp/config/ybb\\_status](http://edit.secure.yahoo.co.jp/config/ybb_status) or 0120-981-488.

※ If "リンク" (Link) LED is blinking or is not lighting even though jumper installation finished, please contact to Yahoo! BB Technical Support Center ([tech@ybb-support.jp](mailto:tech@ybb-support.jp)).

### Caution:

- ※ ADSL Service is best effort type service. There is no guarantee for the communication speed and the connectivity.
- ※ Yahoo! BB ADSL Service and BB Phone Service can not be used or can not establish stable communication with following system: Home Telephone, Business Phone, indoor wiring, telephone connected to door phone, receiving-only line, additional dial-in number, and signal monitoring service, telemetric service for electricity, gas and water meters (no-ringing service) .
- ※ ADSL might not work if you are using some kind of security system via your telephone line. Please ask to the security company about it.
- ※ If you are using Offtalk Service on your telephone line, some noises may interfere to broadcasts via Offtalk Service.

## Confirmation for BB Phone Service <check with beep sound>

Please confirm short beep sound with short intervals when you start to call via BB Phone Service.  
If you can not hear this sound, you can not use BB Phone Service, and then the phone company will charge you for calling.

# Yahoo! BB Trio Modem 12M Setup Guide



## Installation with "Yahoo! BBイージーセットアップ3" (Easy Setup 3)

Yahoo! BB Trio Modem 12M package includes "Yahoo! BBイージーセットアップ3 (Easy Setup 3) CD-ROM. This software helps you to connect your PC to Internet easily. The Wizard will guide you to set up your mail account for Yahoo! BB subscribers with Outlook Express (Windows standard mail client).



## System Requirements

**OS : Japanese-localized version of Windows 95/98/98SE/Me/NT4.0/2000/XP, Mac OS 9/X**

- ※ On Windows NT/2000/XP, you need administrator privilege.
- ※ If your OS is Mac OS 9/X, please start "Yahoo! BBイージーセットアップ3" CD-ROM, and follow the setting procedure displayed (In this Setup Guide, you can refer to only the usage of the Windows version).
- ※ The copyright of "Yahoo! BBイージーセットアップ3" is held by SOFTBANK BB Corp.
- ※ SOFTBANK BB Corp. shall not take responsibility to any obstacles resulting from use of "Yahoo! BBイージーセットアップ3".
- ※ It forbids reproducing and copying all or a part of "Yahoo! BBイージーセットアップ3" without notice.

**Browser/Mail client : Internet Explorer 4.0 or later, Outlook Express 4.0 or later**

## How to use "Yahoo! BB イージーセットアップ3" (Easy Setup 3)

Set "Yahoo! BB イージーセットアップ3" CD-ROM on the CD-ROM drive on your PC. Then "Yahoo! BB イージーセットアップ3" will start automatically.

### ● Yahoo! BB-かんたん-モデム設定 (Setup the ADSL Modem easily)

Follow the instruction of the wizard, If "Yahoo! BB-かんたん-モデム設定" starts, procedure of the installation and connection of modem is indicated. Moreover, a setup of your PC for using ADSL is performed automatically, and you can check actually whether your PC is connecting with the Internet.

#### ● Yahoo! BB-かんたん-モデム設定

- ① In the "Yahoo! BB かんたん モデム設定-1" page, click [次へ (N) >] button.
- ② Choose the ADSL Modem which you are going to connect, and click [このモデムを選択して次へ>>] button. If you cannot find your modem in this list, click [その他のモデム:次へ>>] button (fig.1).
- ③ The figure of the connected method of the modem which it selects is indicated. Please check your wiring.  
※ When [その他のモデム:次へ>>] button is selected, the connection diagram is not indicated. Please refer to the setup guide of the Modem.

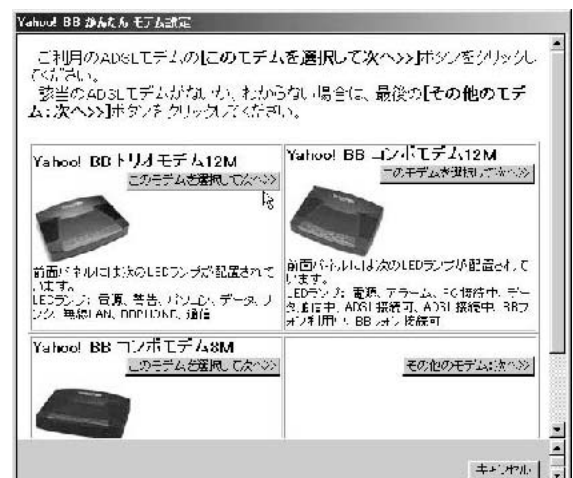


fig.1

# Yahoo! BB Trio Modem 12M Setup Guide



- ④ From the list, choose the network adapter (LAN card) which connected ADSL Modem, and click [次へ (N) >] button (fig.2).
- ⑤ In this page (fig.3), you set the network adapter which is selected. When you cannot click [Yahoo! BB用に自動設定する] button in grey indication, your PC is already optimum to Yahoo! BB ADSL Service, then click [次へ (N) >] button.
- ⑥ To check whether the Internet can be accessed, click [インターネットへの接続を確認する] button (fig.4).
- ⑦ When [× 失敗しました。"× It failed"] is indicated with ⑥, click [キャンセル] button to return to a top screen, then click [サポート/トラブル解決] to check the cause of a trouble.
- ⑧ When [○ 正常です。"○ It is normal"] is indicated with ⑥, click [次へ] to go to the next screen (fig.4). To set Yahoo! Mail, click [メール設定を行う] button. Not to carry out it, click [完了] button, then you return to the top page of "Yahoo! BBイメージセットアップ3".



fig.2



fig.3



fig.4

## ● Yahoo! BB—おてがる—パソコン設定 (Setup Your PC easily)

In this page, you can set up Internet Explorer to use Yahoo! BB ADSL Service. When you have finished the installation and connection of modem, if you do not choose "Yahoo! BB-かんたん-モデム設定" but "Yahoo! BB-おてがる-パソコン設定", you can setup your PC simply.

If [はい] button is clicked to the question of "Internet Explorerの設定をYahoo! BBが推奨する内容に変更しますか?", it is not carried out Dial-up access and set Home page to Yahoo! BB (fig.5).

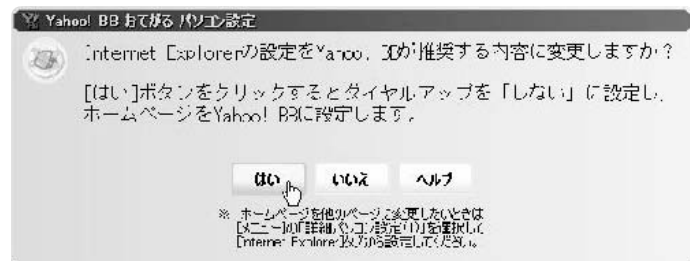


fig.5

And when the question, "Yahoo! BBイメージセットアップ3を終了してInternet Explorerを起動しますか?", is indicated, click [はい] button to end "Yahoo! BBイメージセットアップ3" and to start Internet Explorer. If you click [いいえ] button, you will return to the top page of "Yahoo! BBイメージセットアップ3".

# Yahoo! BB Trio Modem 12M Setup Guide



## ● Yahoo! BB-さくさく-メール設定(Setup Your Mail easily)

With only this page, you can set up Outlook Express ( Windows standard mail client) and use Yahoo! BB mail "@ybb.ne.jp" ( fig.6).

- ※ When Outlook Express has started, please end before you setup a mail.
- ※ Those who have temporary Yahoo! JAPAN ID, beginning from "y-", access "仮Yahoo! JAPAN ID から Yahoo! JAPAN ID へ登録変更" page to acquire formal Yahoo! ID for a setup after clicking [正式なYahoo! JAPAN ID を取得するためにInternet Explorerを起動する] button.

- ① Input the account name (except "@yahoo.co.jp") of Yahoo! mail.
- ② Input your user's name. Since it is the name displayed as a transmitting person of mail, you may not be a real name and can change it later.
- ③ Click [OK] button. The setup is completed now.
- ④ When the question, "Yahoo! BBイージーセットアップ3を終了してOutlook Expressを起動しますか?" is indicated, click [はい] button to end "Yahoo! BBイージーセットアップ3" and to start Outlook Express. If you click [いいえ] button, you will return to the top page of "Yahoo! BBイージーセットアップ3".

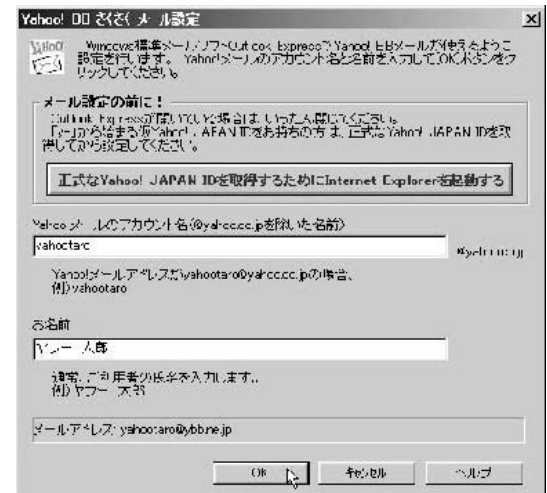


fig.6

## ● サポート／トラブル解決(Support / Troubleshooting)

If you choose "パソコン環境のレポートを表示する" from menu (fig.7), the detailed information of your PC about the hardware, software, network, etc. will be displayed. As for the detailed person please refer in setting of the PC.

When you cannot connect to Internet or do not understand the usage of Yahoo! BB ADSL Service, please be sure to refer to "トラブル解決の参考になるヘルプを表示する (Display the help to refer to Troubleshooting)", "Yahoo! BB よくあるお問い合わせ (FAQ for Yahoo! BB ADSL Service)", "BBフォン よくあるお問い合わせ (FAQ for BB Phone Service)" before the inquiry.

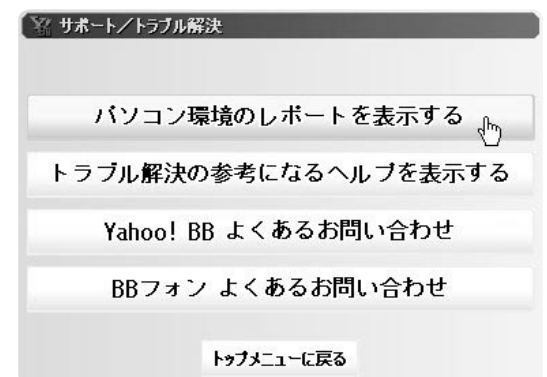


fig.7

## ● お試しアプリ／ドライバ (Trial Application Software and the Driver)

You can install Trial Application Software and the Driver on CD-ROM, or display explanation.

## ● 終了 (Exit Setup Program)

Click [終了] button to exit "Yahoo! BB イージーセットアップ3" program.

## ● ご注意 (Attention)

When you want to change a homepage other than Yahoo! BB, please choose [詳細パソコン設定] of the [メニュー] and input the address of a homepage directly with the [Internet Explorer] tab.